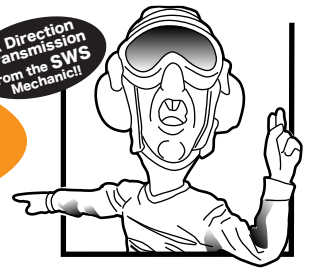


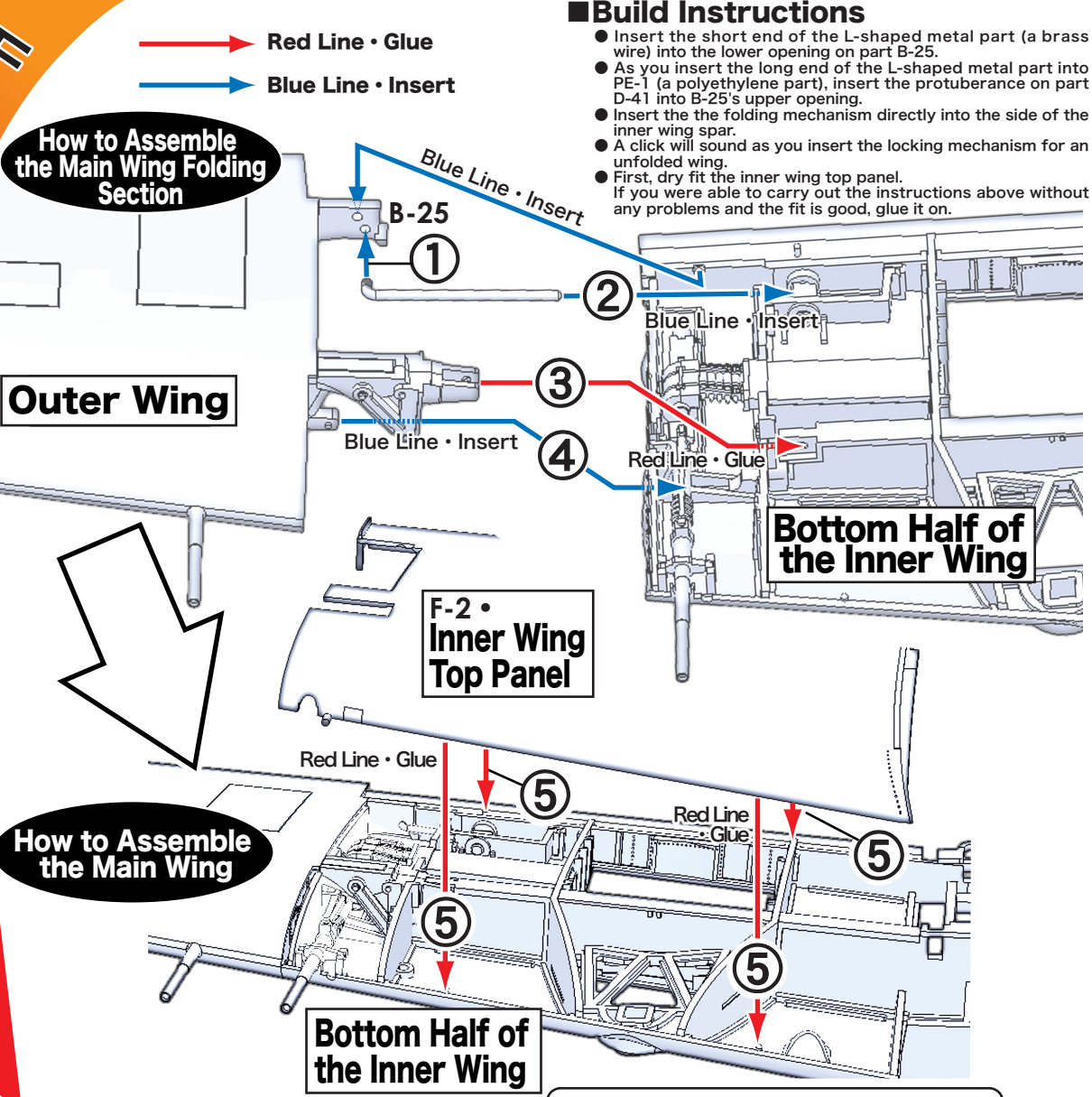
Points of Advice

Regarding the Construction of the Main Wings & Their Folding Mechanisms

A Direction Transmission from the SWS Mechanic!!



How to build even more beautifully and smoothly!!!



Build Instructions

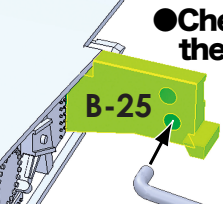
- Insert the short end of the L-shaped metal part (a brass wire) into the lower opening on part B-25.
- As you insert the long end of the L-shaped metal part into PE-1 (a polyethylene part), insert the protuberance on part D-41 into B-25's upper opening.
- Insert the the folding mechanism directly into the side of the inner wing spar.
- A click will sound as you insert the locking mechanism for an unfolded wing.
- First, dry fit the inner wing top panel. If you were able to carry out the instructions above without any problems and the fit is good, glue it on.

Important Points!!

- 1** Be sure to insert the short end of the L-shaped metal part into the lower opening. Please do not get the two openings mixed up. (※ Refer to the top half of the diagram on the right.)
- 2** After inserting the long end of the L-shaped metal part into PE-1, confirm whether it can move smoothly in and out.
- 3** When the outer wing has been attached but before everything has been glued, try folding the the wing to confirm that everything is moving smoothly.
- 4** There is a locking mechanism to hold the wings in place when unfolded. Things may be stiff when the parts are first inserted, but the parts will adjust and things will loosen up if you fold and unfold the wings several times.
- 5** Before you glue on the inner wing top panel (part F-2), first dry fit to confirm whether the upper and lower halves of the wing can be attached to each other without any gaps. Use a large clip (or something similar) to hold everything together until the glue has completely dried. (※ Refer to the lower half of the diagram on the right.)

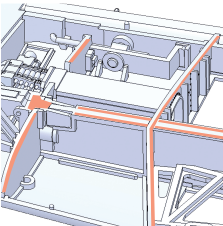
※ Confirm beforehand !!

● Check the state of the opening in the outer wing structure (B-25).



1. Confirm whether the lower opening is being obstructed by excess plastic or not.
2. If the opening is blocked, use a craft knife or a pin vise to open it up.

● Check the fit of the top and bottom halves of the inner wing.



1. Confirm whether the inner wing top panel can be attached without any gaps.
2. If there are gaps, please adjust the fit by sanding down parts (such as the inner wing ribs) where they touch the panel. Sand down seam lines and edges (outlined in ■) little by little until the fit is exact.