

3-2. S 後部座席 Rear Seat

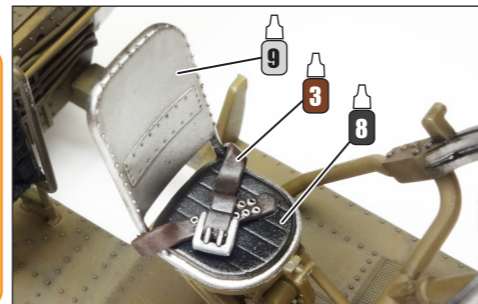
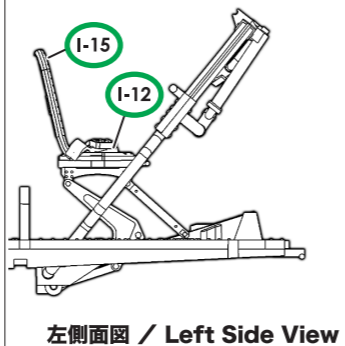
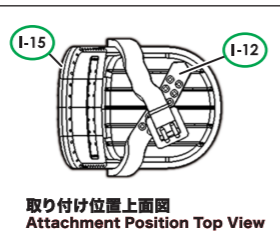
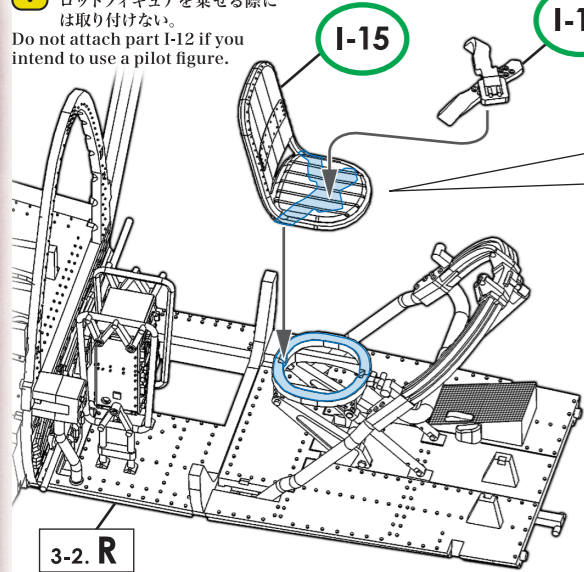
■ 接着位置 Cementing position

実機におけるパーツ名 Name of the parts implemented in the actual aircraft.

I-15 I-12 後部座席 Rear Seat

各パーツ接着位置 Parts configuration after assembly.

! I-12は、アフターパーツのパイロットフィギュアを乗せる際には取り付けない。
Do not attach part I-12 if you intend to use a pilot figure.

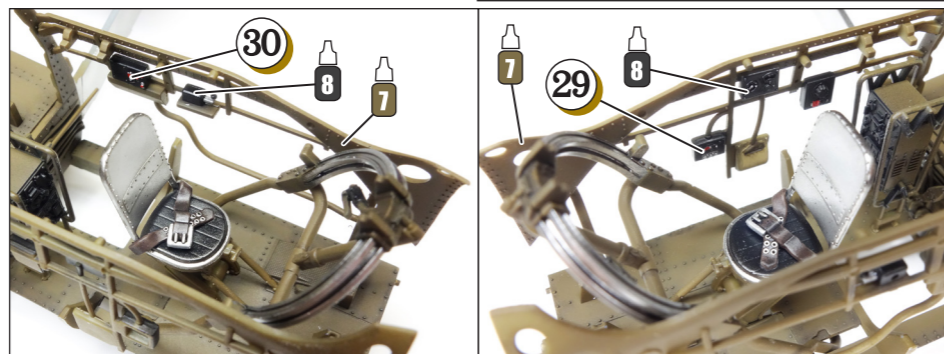
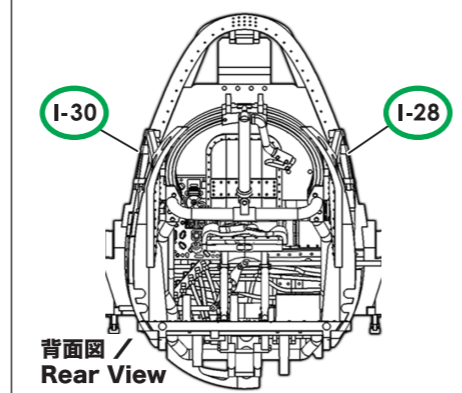
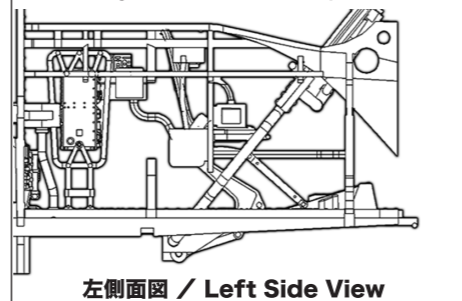
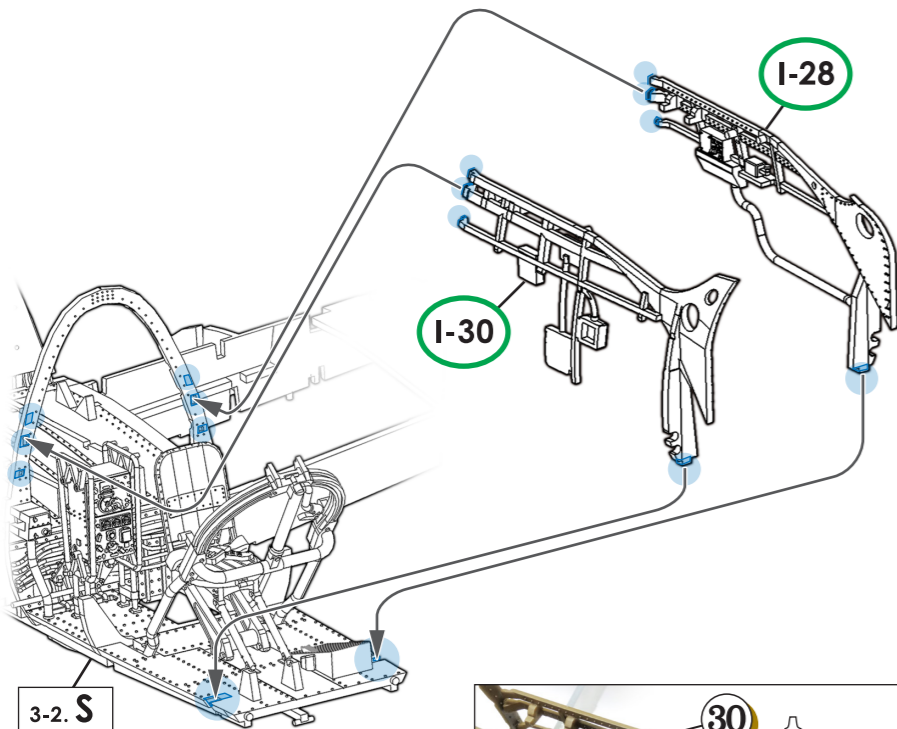


SWS-Design-Concept
屠龍の後席は同乗者席と呼ばれていた。同乗者は後部旋回機銃の操作や胴体下面ホ3 20mm機関砲の弾倉交換、無線機の操作など、さまざまな任務をこなした。The rear seat of the Toryu was called the "passenger seat." The pilot in the rear seat was responsible for a variety of tasks including operating the rear-firing turret gun and the Ho-3 20mm machine cannon on the fuselage underside, as well as the transceiver.

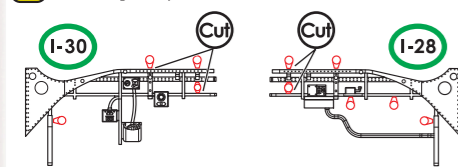
3-2. T 後席側壁 Rear Seat Side Wall

実機におけるパーツ名 Name of the parts implemented in the actual aircraft. I-28 I-30 後席側壁 Rear Seat Side Wall

各パーツ接着位置 Parts configuration after assembly.



! 不要部分をカットする。 Cut the parts you don't need.



3-2. U 後席隔壁 Rear Seat Bulkhead

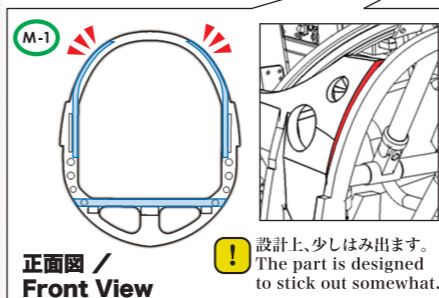
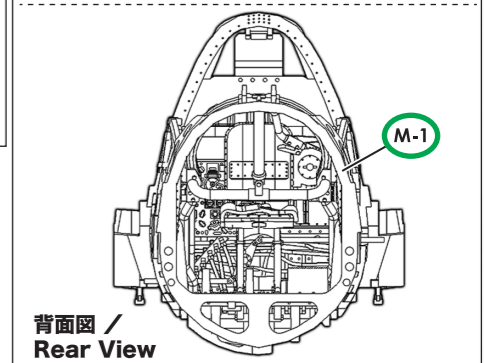
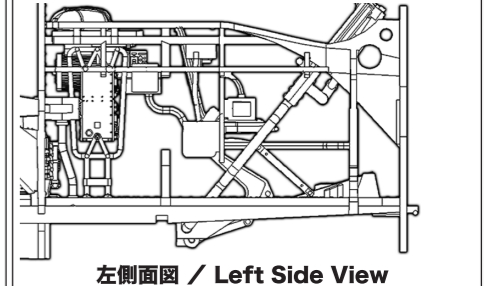
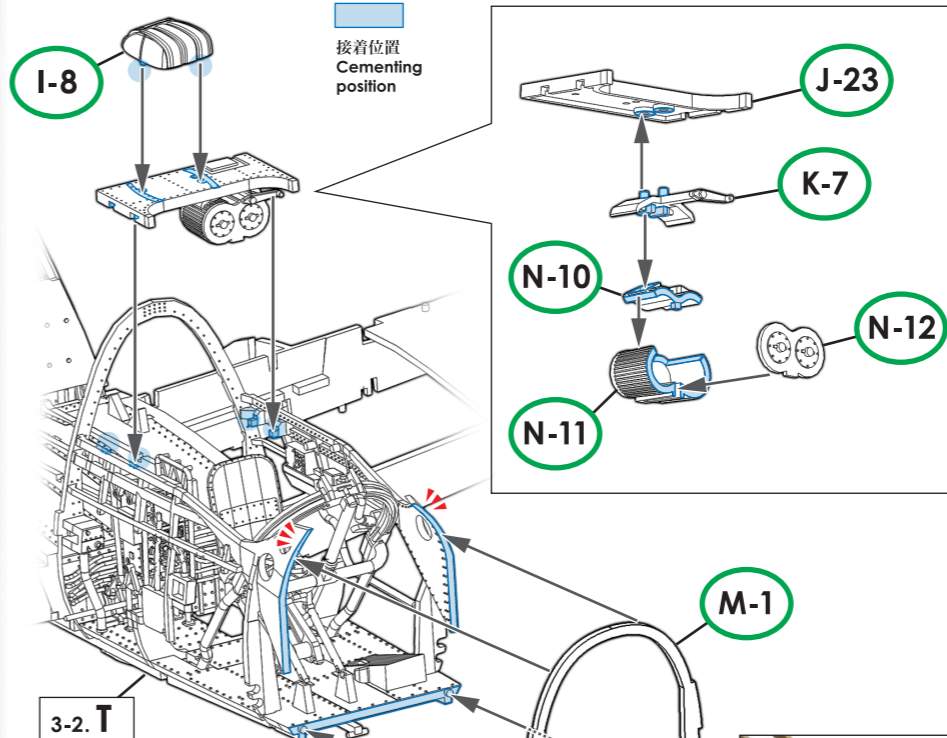
■ 接着位置 Cementing position

実機におけるパーツ名 Name of the parts implemented in the actual aircraft.

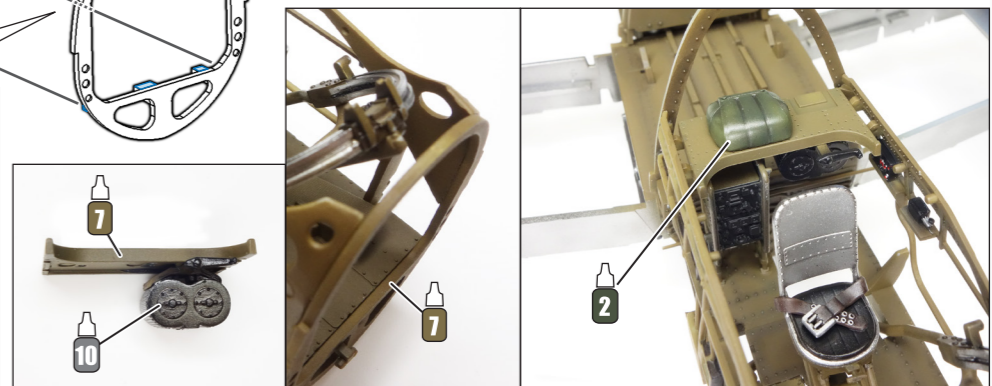
M-1 第13番助材 No.13 Bulkhead
K-7 予備弾倉上下用ハンドル Handle to Raise/Lower Spare Magazines

J-23 予備弾倉架 Spare Magazine Rack
I-8 パラシュート Parachute
N-10 N-11 N-12 ホ3 予備弾倉 Ho-3 Spare Magazine

各パーツ接着位置 Parts configuration after assembly.



! 設計上、少しはみ出ます。 The part is designed to stick out somewhat.

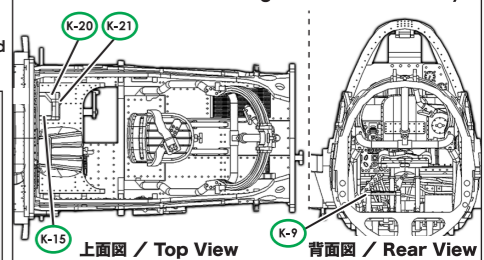
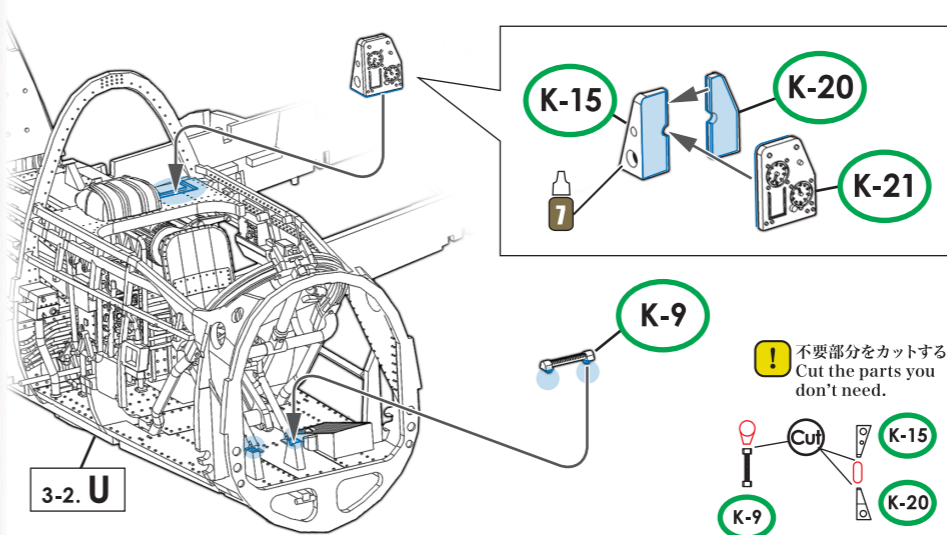


3-2. V 後席補助計器 Rear Seat Auxiliary Instrument Panel

実機におけるパーツ名 Name of the parts implemented in the actual aircraft.

K-15 K-20 K-21 後席補助計器 Rear Seat Auxiliary Instrument Panel
K-9 足掛け Foothold

各パーツ接着位置 Parts configuration after assembly.



! 不要部分をカットする。 Cut the parts you don't need.

