

### Attention!

- This item is meant for hobbyists 15 years of age or older. Please do not give this item to children under 15.
- This item is intended for use with the Zoukei-mura 1/32 "Ki-45 Kai TORYU".
- The polyethylene bags that contain the parts and the assembly manual present a suffocation risk. Please do not drop the parts or bend them in unintended ways, as they may be damaged.
- In order to properly express the shape of the sculpt, it was unavoidable for some parts to have sharp edges. Please be careful.

ZOUKEI-MURA INC. PRESENTS  
**SUPER WING SERIES**  
1/32 KAWASAKI  
**Ki-45 Kai TORYU**  
(NICK)  
These are extra parts to be used with the "Ki-45 Kai TORYU" kit.

**造形村** MASTER BOX LTD.  
ZOUKEI-MURA INC.  
https://www.zoukeimura.co.jp/  
Plan & Manufacturer: Zoukei-Mura, Inc.  
Design: MASTER BOX LTD.  
Distributor: VOLKS, Inc.  
60 Conochi Nakamachi Shichi-jo, Shimogyo-ku, Kyoto Japan 600-8862

## SUPER WING OPTIONS

ZOUKEI-MURA INC. PRESENTS  
**SUPER WING SERIES. No.13** SWS13-F01  
1/32 屠龍  
 Fits Ko, Hei, Tei  
 Kawasaki Ki-45 Kai Type 2 Two-seat Fighter  
 TORYU (NICK)

### Forward Facing Pilot Figure

ZOUKEI-MURA INC. PRESENTS  
**SUPER WING SERIES**  
1/32 KAWASAKI  
**Ki-45 Kai TORYU**  
(NICK)  
These are extra parts to be used with the "Ki-45 Kai TORYU" kit. Only the front pilot is included.

This is a resin kit. Please note that these parts cannot be glued with plastic model kit cement. Instant glue should be used instead.

造形村  
ZOUKEI-MURA INC.

Plan & Manufacturer: Zoukei-Mura, Inc.  
Design: MASTER BOX LTD.  
Distributor: VOLKS, Inc.  
©ZOUKEI-MURA INC. All Rights reserved.

**SUPER WING OPTIONS**  
1/32  
ZOUKEI-MURA INC. PRESENTS  
KAWASAKI Ki-45 Kai Type 2 Two-seat Fighter  
屠龍  
TORYU (NICK)  
1/32 KAWASAKI  
Ki-45 Kai TORYU (NICK)  
These are extra parts to be used with the "Ki-45 Kai TORYU" kit.

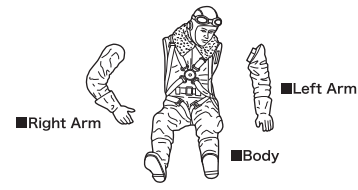
TORYU Forward Facing Pilot Figure  
4 518992 529691

### ◆◆Important Points for Assembly◆◆

- Please carefully read the assembly manual prior to opening and make sure that everything is included.
- To use this item, tools such as ●Nippers, ●craft knife, ●files, ●sanding papers, ●instant glue, etc., are required, so please prepare them.
- Please prepare the parts first. You can remove seam lines and gate marks with tools such as nippers, a craft knife and files. Urethane resin is softer than the plastic material used for the kit, so be careful to avoid carving too much. Air bubbles can be filled with putty (epoxy, plastic, etc.) or similar, then finished with sanding paper. In the case that mold details are lost, you can recover them with tools such as spatulas.
- During assembly, adjust the orientation of each part while checking the balance and pose of the entire kit.
- Instant glue should be used for these parts. Please note that they cannot be glued with plastic model kit cement.
- We recommend using brass wire (sold separately) to reinforce the areas where the parts are glued together. Use a pin vise and drill bit to open a hole on both sides of each gluing surface, then insert the ends of a brass wire into the holes to connect the sides. This will greatly increase the strength of each joint. (Using the wires without glue to temporarily build a figure is called dry fitting. We recommend doing so in order to check each figure's balance.)
- Base preparation is required before painting. Please thoroughly finish the base with a coat of surfacer spray (otherwise, the paint will chip off as time passes).
- The recommended brand for painting your kit is the environment-friendly latex line of paint from Vallejo Color. Please refer to the Zoukei-mura 1/32 "Ki-45 Kai TORYU" Instruction Manual and Imperial Japanese Army historical manuals to paint the model with the coloring of your choice.

※When it comes time to use tools and paints, please carefully follow the individual instructions respective to each tool for your safety.

### Chart of Included Parts



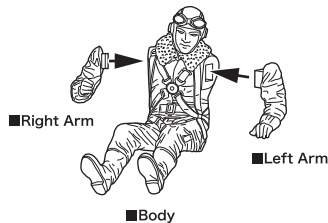
We take the utmost of care when overseeing manufacturing, but if your kit is among the very small percentage that contains a defective part, please contact customer service within two weeks of your purchase with your full name and order number.

Purchasers from VOLKS  
Japan International Web Site:  
Please contact imos@volks.co.jp  
Purchasers from VOLKS USA:  
Please contact service@volksusa.com

## 1/32 "Toryu" Assembly Instructions

### ◆Pilot Assembly

Pay attention to the "Important Points for Assembly" when you assemble the resin parts of this set. Please see the Color Reference for painting.



### ■Color Reference



vallejo  
Color Guide

MC-Model Color  
i.e. Vallejo Catalog Number

Skin color:  
70955 (MC018)  
FLAT FLESH

Flight Suit:  
70975 (MC135)  
BEIGE BROWN

Shoes and Gloves:  
70965 (MC146)  
HULL RED

Belt:  
70975 (MC089)  
MILITARY GREEN JY

Metallic Details:  
70997 (MC171)  
SILVER

Collar:  
70928 (MC006)  
LIGHT FLESH

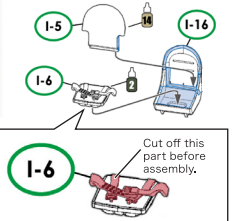
Goggles:  
70861 (MC170)  
GLOSSY BLACK

Pilot's Back:  
70976 (MC120)  
BUFF

### ◆How to Insert the Pilot in the Aircraft

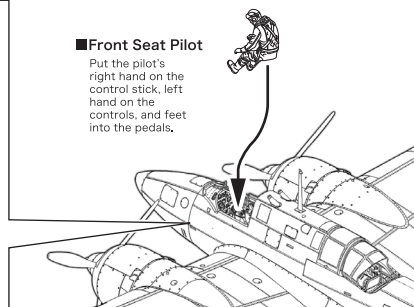
1/32 TORYU Tel  
Instruction Manual  
p17  
Front Seat  
How to Assemble

3-2. K 操縦者座席  
Front Seat



### ■Front Seat Pilot

Put the pilot's right hand on the control stick, left hand on the controls, and feet into the pedals.



Sit the pilot in place before attaching the canopy.

“TORYU” Fuselage

These parts will be inserted when assembling the 1/32 "TORYU" kit. Please refer to the instruction manual of the "TORYU Tel". Page numbers may vary for Ko and Hei versions.