

# Attention!

- This item is meant for hobbyists 15 years of age or older. Please do not give this item to children under 15.
- This item is intended for use with the Zoukei-mura 1/32 "Ki-45 Kai TORIYU".
- The polyethylene bags that contain the parts and assembly manual present a suffocation risk. Please do not drop the parts or bend them in unintended ways, as they may be damaged.
- In order to properly express the shape of the sculpt, it was unavoidable for some parts to have sharp edges. Please be careful.

**ZOUKEI-MURA INC. PRESENTS**  
**SUPER WING SERIES**  
**1/32 KAWASAKI**  
**Ki-45 Kai TORIYU**  
(NICK)  
These are extra parts to be used with the "Ki-45 Kai TORIYU" kit.

**造形村**  
**MOB**  
**ZOUKEI-MURA INC.**  
MASTER BOX LTD.  
<https://www.zoukeimura.co.jp/>  
■ Plan & Manufacturer: Zoukei-Mura, Inc.  
■ Design: MASTER BOX LTD.  
■ Distributor: VOLKS, Inc.  
60 Goshomachi Nakamachi Shiohji-jo, Shimogyo-ku, Kyoto Japan 600-8862

# SUPER WING OPTIONS

**ZOUKEI-MURA INC. PRESENTS**  
**SUPER WING SERIES. No.13**  
**SWS13-F03**  
**1/32 屠龍**  
**TORIYU**  
(NICK)  
Kawasaki Ki-45 Kai Type 2 Two-seat Fighter

## Flight Assistance Set

**ZOUKEI-MURA INC. PRESENTS**  
**SUPER WING SERIES**  
**1/32 KAWASAKI**  
**Ki-45 Kai TORIYU**  
(NICK)  
These are extra parts to be used with the "Ki-45 Kai TORIYU" kit. Includes one pilot figure and one maintenance crew member figure.

This is a resin kit. Please note that these parts cannot be glued with plastic model kit cement. Instant glue should be used instead.

**造形村**  
**ZOUKEI-MURA INC.**  
■ Plan & Manufacturer: Zoukei-Mura, Inc.  
■ Design: MASTER BOX LTD.  
■ Distributor: VOLKS, Inc.  
©ZOUKEI-MURA INC. All Rights reserved.

**SUPER WING OPTIONS**  
**1/32 TORIYU**  
(NICK)  
**屠龍**  
**1/32 KAWASAKI**  
**Ki-45 Kai TORIYU**  
(NICK)  
These are extra parts to be used with the "Ki-45 Kai TORIYU" kit.

**Flight Assistance Set**  
4 518992 428871

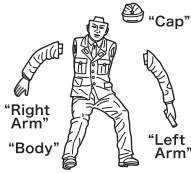
## ◆◆Important Points for Assembly◆◆

- Please carefully read the assembly manual prior to opening and make sure that everything is included.
- To use this item, tools such as **■ Nippers**, **■ Craft knife**, **■ Files**, **■ Sanding papers**, **■ Instant glue**, etc., are required, so please prepare them.
- Please prepare the parts first. You can remove seam lines and gate marks with tools such as nippers, a craft knife and files. Urethane resin is softer than the plastic material used for the kit, so be careful to avoid carving too much. Air bubbles can be filled with putty (epoxy, plastic, etc.) or similar, then finished with sanding paper. In the case that mold details are lost, you can recover them with tools such as spatulas.
- During assembly, adjust the orientation of each part while checking the balance and pose of the entire kit.
- Instant glue should be used for these parts. Please note that they cannot be glued with plastic model kit cement.
- We recommend using brass wire (sold separately) to reinforce the areas where the parts are glued together. Use a pin vise and drill bit to open a hole on both sides of each gluing surface, then insert the ends of a brass wire into the holes to connect the sides. This will greatly increase the strength of each joint. (Using the wires without glue to temporarily build a figure is called dry fitting. We recommend doing so in order to check each figure's balance.)
- Base preparation is required before painting. Please thoroughly finish the base with a coat of surface spray (otherwise, the paint will chip off as time passes).
- The recommended brand for painting your kit is the environment-friendly latest line of paint from Vallejo Color. Please refer to the Zoukei-mura 1/32 "Ki-45 Kai TORIYU" Instruction Manual and Imperial Japanese Army historical manuals to paint the model with the coloring of your choice.

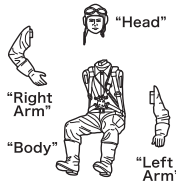
※When it comes time to use tools and paints, please carefully follow the individual instructions respective to each tool for your safety.

## Chart of Included Parts

### ■ Maintenance Crew



### ■ Pilot



We take the utmost of care when overseeing manufacturing, but if your kit is among the very small percentage that contains a defective part, please contact customer service within two weeks of your purchase with your full name and order number.

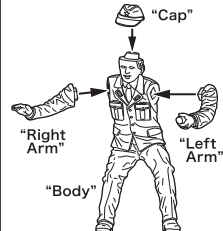
Purchasers from VOLKS Japan International Web Site : Please contact [imos@volks.co.jp](mailto:imos@volks.co.jp)  
Purchasers from VOLKS USA : Please contact [service@volksusa.com](mailto:service@volksusa.com)

## 1/32 "Toryu" Assembly Instructions

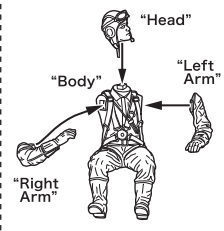
### ◆ Maintenance Crew and Pilot Assembly

Pay attention to the "Important Points for Assembly" when you assemble the resin parts of this set. Please see the Color Reference for painting.

#### ■ Maintenance Crew



#### ■ Pilot



#### ■ Color Reference

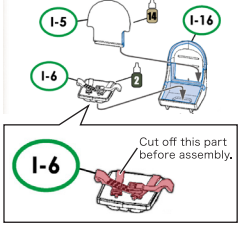


#### ■ Color Reference



## ◆ Assemble with Aircraft

1/32 TORIYU  
Instruction Manual **p17**  
**3-2. K** 操縦者座席  
Front Seat



## Assembled Example

Sit the pilot in place before attaching the canopy.

If you will put the pilot in the rear seat, do not attach part I-12 (rear seatbelt).

\*These parts will be inserted when assembling the 1/32 "TORIYU" kit. Please refer to the instruction manual of the "TORIYU" kit. Page numbers may vary for Ko and Hei versions.

<b>vallejo</b> vallejo Color Guide MC=Model Color GC=Game Color ( )= Vallejo Catalog Number	<b>Maintenance Crew's Skin color:</b> 72004 (GC) ELF SKINTONE	<b>Pilot's Skin color:</b> 70955 (MC018) FLAT FLESH
<b>Maintenance Crew's Hair color:</b> 70862 (MC168) BLACK GREY	<b>Flight Suit:</b> 70875 (MC135) BEIGE BROWN	<b>Shoes (both of them)</b> Pilot's Gloves: 70955 (MC146) HULL RED
<b>Maintenance Crew's Color of the Suit:</b> 70880 (MC113) KHAKI GREY	<b>Maintenance Crew's Color of the Shirt:</b> 70918 (MC005) IVORY	<b>Pilot's Belt:</b> 70975 (MC089) MILITARY GREEN
<b>Maintenance Crew's Color of the Necktie:</b> 70836 (MC161) LONDON GREY	<b>Pilot's Metallic Details:</b> 70997 (MC171) SILVER	<b>Sole (both of them)</b> Pilot's Goggles: 70949 (MC010) LIGHT YELLOW
<b>Maintenance Crew's Cap badge:</b> 70949 (MC010) LIGHT YELLOW	<b>Maintenance Crew's Cylinder:</b> 70981 (MC131) ORANGE BROWN	<b>Pilot's Back:</b> 70976 (MC120) BUFF