

Attention!

- This item is meant for hobbyists 15 years of age or older. Please do not give this item to children under 15.
- This item is intended for use with the Zoukei-mura 1/32 "Ki-45 Kai TORIYU".
- The polyethylene bags that contain the parts and assembly manual present a suffocation risk. Please do not drop the parts or bend them in unintended ways, as they may be damaged.
- In order to properly express the shape of the sculptures, it was unavoidable for some parts to have sharp edges. Please be careful.

ZOUKEI-MURA INC. PRESENTS
SUPER WING SERIES
1/32 KAWASAKI
Ki-45 Kai TORIYU
(NICK)
These are extra parts to be used with the "Ki-45 Kai TORIYU" kit.

造形村
ZOUKEI-MURA INC.
Main Design Consultant
<https://www.zoukeimura.co.jp/>
■ Plan & Manufacturer : Zoukei-Mura, Inc.
■ Design : MDC
■ Distributor : VOLKS, Inc.
60 Goshonochi Nakamachi 5-chōme-10, Shimogyo-ku, Kyoto Japan 600-8862

SUPER WING OPTIONS

ZOUKEI-MURA INC. PRESENTS
SUPER WING SERIES, No.13 [SWS13-M01]
Fits
Ko, Hei, Tei
TORIYU
(NICK)
Kawasaki Ki-45 Kai
Type 2
Two-seat Fighter

Metal Struts



This kit is made of brass. Please note that these parts cannot be glued with plastic model kit cement. Instant glue should be used instead.

造形村
ZOUKEI-MURA INC.
■ Plan & Manufacturer : Zoukei-Mura, Inc.
■ Design : MDC
■ Distributor : VOLKS, Inc.
©ZOUKEI-MURA INC. All Rights reserved.

SUPER WING OPTIONS

1/32 SUPER WING OPTIONS
[SWS13-M01]
Kawasaki Ki-45 Kai
Type 2 Fighter
1/32 KAWASAKI
Ki-45 Kai TORIYU (NICK)
These are extra parts to be used with the "Ki-45 Kai TORIYU" kit.

Metal Struts

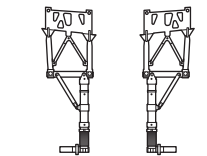


◆ Important Points for Assembly ◆

- Before opening the bag, please carefully read this instruction manual and verify that all the parts are included. Please also refer to the 1/32 "Ki-45 Kai TORIYU" instruction manual to use these parts.
- To build this kit, a big pincher, a cutting knife, sandpaper, waterproof sandpaper, instant glue, and Metal Primer spray are required. Please make sure they are at hand before starting your work.
- This kit is made brass. Parts are remodeled. After cutting with the large pincher the "gate" made during production, scrape the flash with sandpaper and polish the surface using waterproof sandpaper. Because the blade of nippers might break up, please use caution. After roughly sharpening the "parting lines" with the cutting knife and the sandpaper, clean up and polish the surface with waterproof sandpaper. This brass material is very hard. Be careful when you cut or modify.
- To affix the parts of the kit, please use instant glue. Please do not use glue dedicated to plastic models.
- Before painting, make a primer coat using the Metal Primer. (Without primer coat, paint may peel.)
- The recommended brand for painting your kit is the environment-friendly latest line of paint from Vallejo Color. Please refer to the Zoukei-mura 1/32 "Ki-45 Kai TORIYU" Instruction Manual and Imperial Japanese Army historical manuals to paint the model with the coloring of your choice.

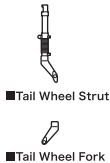
※ Please carefully use the tools and the solvents used for assembly and painting by referring to their instruction manuals.

Chart of Included Parts



■ Main Landing Gear Strut (Right) ■ Main Landing Gear Strut (Left) ■ Tail Wheel Strut

This brass material is very hard. Be careful when you cut or modify.



We take the utmost of care when overseeing manufacturing, but if your kit is among the very small percentage that contains a defective part, please contact customer service within two weeks of your purchase with your full name and order number.

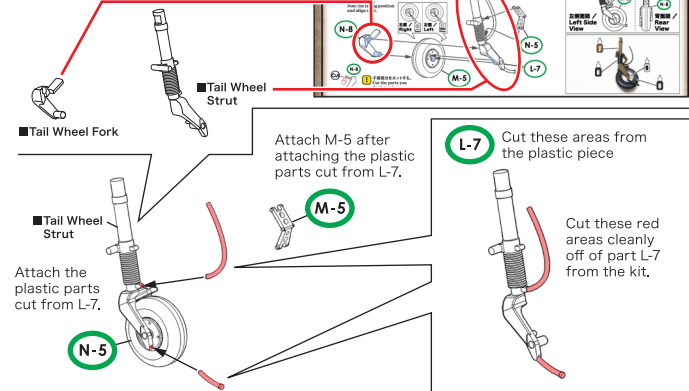
Purchasers from VOLKS
Japan International Web Site:
Please contact imos@volks.co.jp
Purchasers from VOLKS USA:
Please contact service@volksusa.com

1/32 "Toryu" Assembly Instructions

These parts will be inserted when assembling the 1/32 "TORIYU" kit. Please refer to the instruction manual of the "TORIYU Tei". Page numbers may vary for Ko and Hei versions.

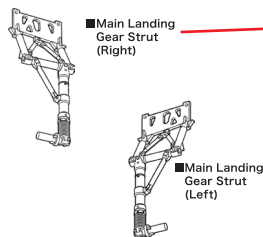
◆ Tail Wheel Strut Attachment

Instead of parts L-7 and N-8, insert and attach the tail wheel fork and the tail wheel strut of this set.



◆ Main Landing Gear Strut (Right)(Left) Attachment

Instead of parts P-5(right) and P-26(left), insert and attach the main landing gear strut (right) and the main landing gear strut (left) of this set.



When using the weighted tires parts (sold separately), the accuracy of the kit increases considerably.