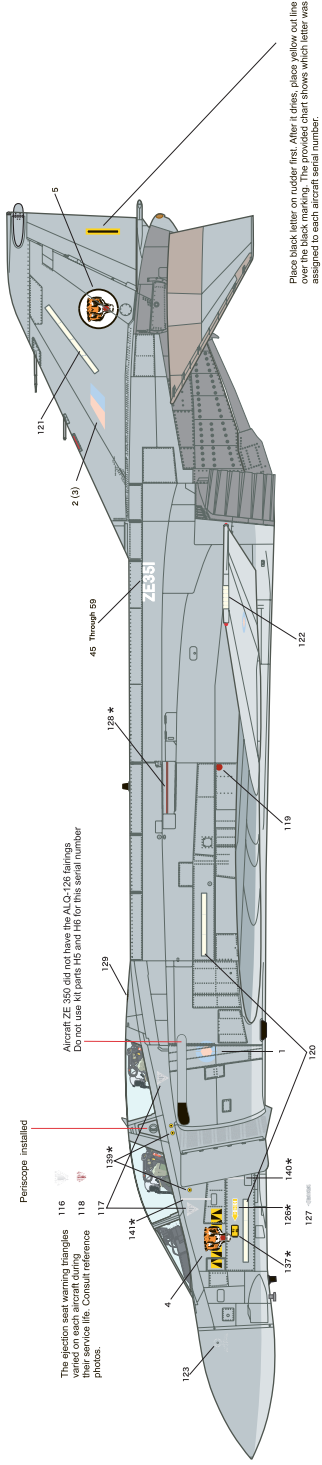


Post Delivery Scheme 1984-1985

-  FS 36440
-  FS 36314
-  FS 36270

Decals marked with an * are on the left side only

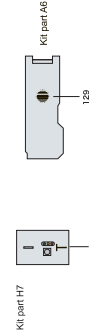


The ejection seat warning triangles 116
118
117
120*
141*
137*
126*
127
125
123

Periscope installed

Aircraft ZE 359 did not have the ALC-126 fittings.
Do not use kit parts 70 and 76 for this serial number

Place black letter on rudder first. After it dries, place yellow outline over the black marking. The provided chart shows which letter was assigned to each aircraft serial number.



45	ZE350	T	50	ZE355	S	55	ZE360	O
46	ZE351	I	51	ZE356	O	56	ZE361	P
47	ZE352	G	52	ZE357	N	57	ZE362	V
48	ZE353	E	53	ZE358	H	58	ZE363	W
49	ZE354	R	54	ZE359	J	59	ZE364	Z

