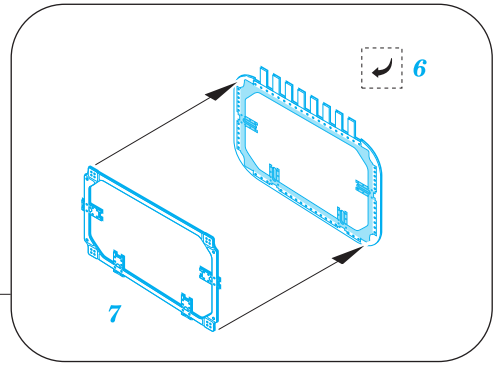
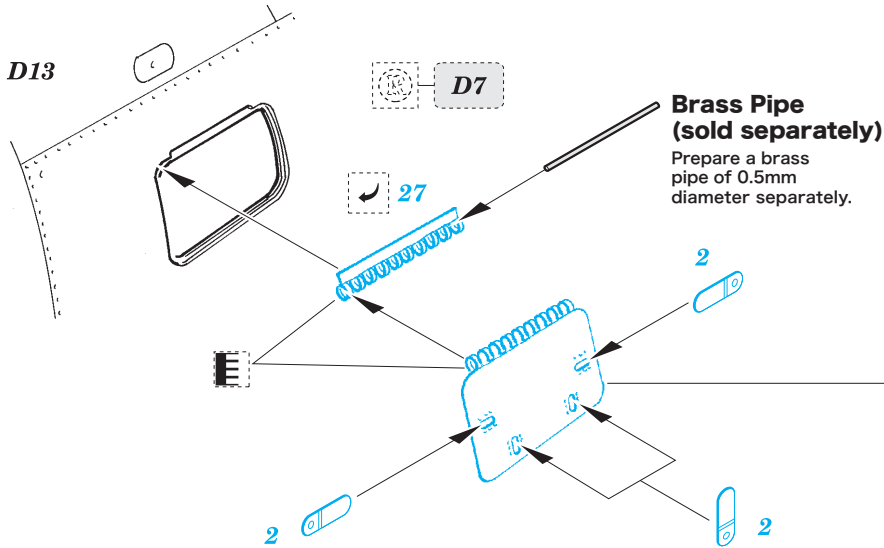


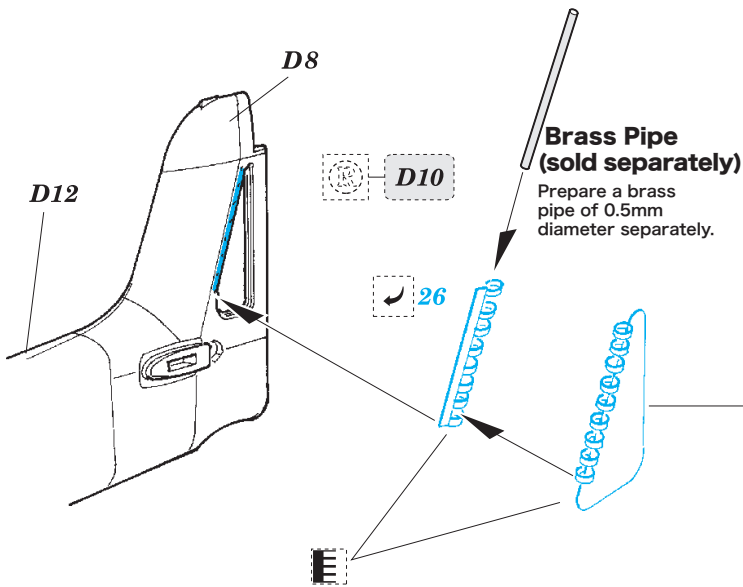
Equipment Access Panel Assembly

1/32 Ta 152 H-1
Instruction Manual **P14**



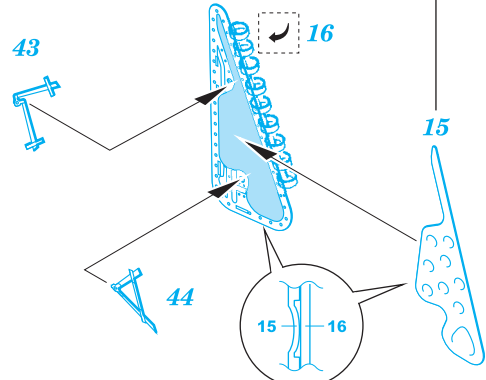
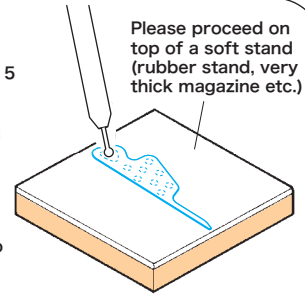
Rear Wheel Strut Access Panel Assembly

1/32 Ta 152 H-1
Instruction Manual **P15**



Panel Process and Assembly

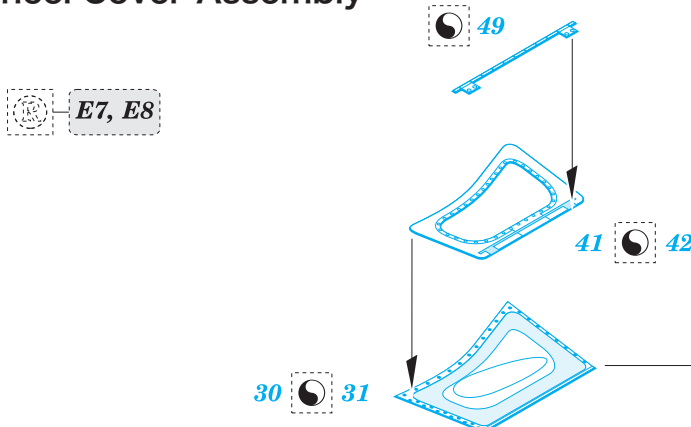
Press the photo-etched part 15 from the opposite side of the molds with a varnish for in letter or a spatula, and recreate the concave molds. Using a sharp tool like a pen may damage the part, so please be careful.



Fitting cross-section view

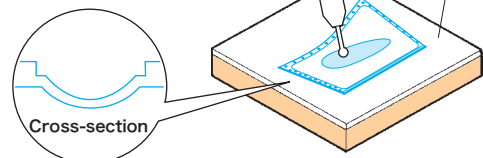
Wheel Cover Assembly

1/32 Ta 152 H-1
Instruction Manual **P25**



Press the photo-etched parts 30 and 31 from the side with the molds to recreate the convex molds. Proceed carefully while referring to the instruction manual.

Please proceed on top of a soft stand (rubber stand, very thick magazine etc.)



Cross-section