

SUPER WING OPTIONS

ZOUKEI-MURA INC. PRESENTS
SUPER WING SERIES® No.5
1/32 Imperial Japanese Navy Interceptor J2M3

雷電 RAIDEN

Photo-Etched Interior Set

ZOUKEI-MURA INC. PRESENTS
SUPER WING SERIES
1/32
J2M3 RAIDEN
These are extra parts to be used with the "J2M3 RAIDEN" kit.

These are photo-etched parts. Please be careful during assembly.
Plastic model cement won't work on these parts. Please use a suitable instant glue.

SWS05-M04

Attention!

- This item is meant for hobbyists 15 years of age or older. Please do not give this item to children under 15.
- This item is intended for use with the Zoukei-mura 1/32 "J2M3 RAIDEN"
- The polyethylene bags that contain the parts and assembly manual present a suffocation risk. Please do not drop the parts or bend them in unintended ways, as they may be damaged.
- In order to properly express the shape of the items, it was unavoidable for some parts to have sharp edges. Please be careful. Also, please make sure not to leave them in the reach of small children.

Plan & Design : Zoukei-Mura, Inc. Manufacturer : Eduard
Distributor : VOLKS, Inc. <http://www.volks.co.jp/en/index.aspx>
60 Goshonouchi Nakamachi Shichi-jo, Shimogyo-ku, Kyoto Japan 600-8862

Notices Before Assembly

For use of this part, please refer to the instruction manual of the "J2M3 RAIDEN" and prepare the required tools.
Please use nippers for etching parts when cutting off the etching parts. Tweezers may also be very useful when handling the parts you cut and attaching them to the kit.
To affix the parts of the kit, please use an instant glue. Please do not use glue dedicated to plastic models. Before painting, make a primer coat using a Metal Primer. (Without primer coat, paint may peel.)
The recommended brand for painting your kit is the latest line of paint from Vallejo Color, due to its non-toxicity and environmental friendliness. With referring to resources on historical Luftwaffe aircrafts, please check the instruction manual of 1/32 "J2M3 RAIDEN."
Please use caution when handling the tools and solvents used for assembly and painting by referring to their instruction manuals.

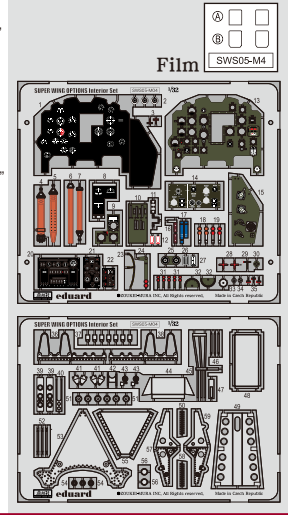
We take the utmost of care when overseeing manufacturing, but if your kit is among the very small percentage that contains a defective part, please contact customer service within two weeks of your purchase with your full name and order number.
Purchasers from VOLKS Japan International Web Site:
Please contact imos@volks.co.jp.
Purchasers from VOLKS USA : Please contact service@volksusa.com.

Please note that items which have been opened, or worked with, can't be exchanged. Thank you for your understanding.

造形村 ZOUKEI-MURA INC. **eduard** 4 518992 223643

<http://www.zoukeimura.co.jp/> <http://www.eduard.com>

©ZOUKEI-MURA INC, All Rights reserved. Made in Czech Republic



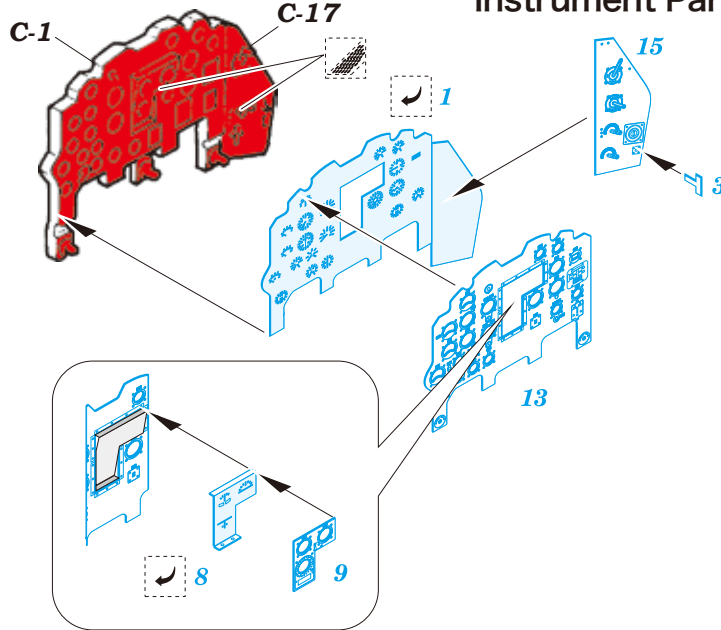
Marks Used in the Instructions

- Do the same for right and left.
- Cut off.
- Bend.
- Scrape away.
- Choose one.
- Make a hole.
- Replace the default part.

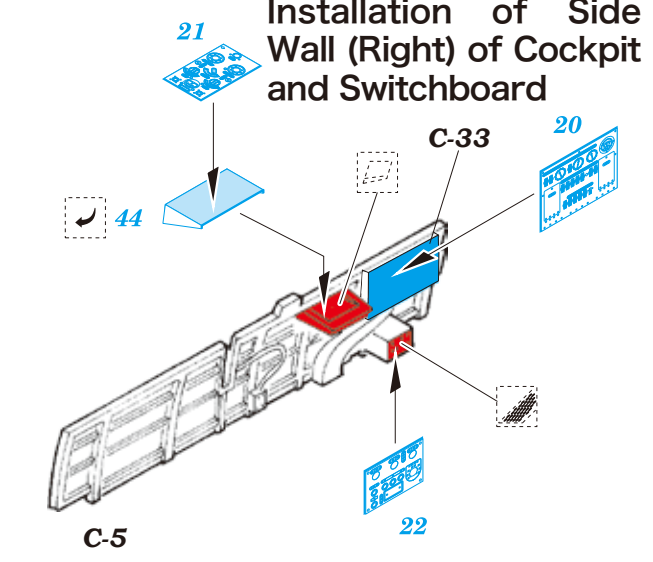
Colors Used in the Instructions

- Parts of the Kit.
- Parts of this Photo-Etched Set.
- Cut off this area.
- Fill this opening with a putty, or similar.

1/32 J2M3 RAIDEN Instruction Manual P. 15 3-2. G Instrument Panel Installation of Instrument Panel



1/32 J2M3 RAIDEN Instruction Manual P. 15 3-2. H Cockpit Side Wall Installation of Side Wall (Right) of Cockpit and Switchboard



1/32 J2M3 RAIDEN Instruction Manual P. 15 3-2. H Cockpit Side Wall Installation of Control Levers

Installation of Control Levers

