

### Attention!

- This item is meant for hobbyists 15 years of age or older. Please do not give this item to children under 15.
- This item is intended for use with the Zoukei-mura 1/32 "Ta 152H-1".
- The polyethylene bags that contain the parts are an assembly manual present a surfocation risk. Please do not drop the parts or bend them in unintended ways, as they may be damaged.
- In order to properly express the shape of the sculptures, it was unavoidable for some parts to have sharp edges. Please be careful.

**SUPER WING SERIES**  
1/32  
"Ta 152 H-1"  
These are extra parts to be used with the "Ta 152 H-1" kit.

**造形村**  
ZOUKEI-MURA INC.

<http://www.zoukeimura.co.jp/>  
 ■Manufacturer : Zoukei-Mura, Inc.  
 ■Distributor : VOLKS, Inc.  
<http://www.volks.co.jp/en/>  
 600 Gonsouchi Nakamachi Shichi-jo, Shimogyo-ku, Kyoto Japan 600-8862

## SUPER WING OPTIONS

ZOUKEI-MURA INC. PRESENTS SUPER WING SERIES No.02  
1/32 FOCKE-WULF [SWS02-F02]

**SUPER WING SERIES**  
1/32  
"Ta 152 H-1"

### Armament Crew Set



These parts are made of urethane resin. Please be careful during assembly.  
Plastic model cement won't work on these parts. Please use a suitable instant glue.

**造形村**  
ZOUKEI-MURA INC.

©ZOUKEI-MURA INC. All Rights reserved.

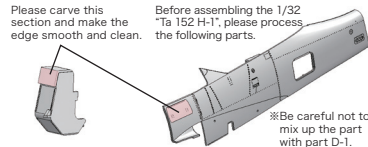
**SUPER WING OPTIONS**  
1/32 FOCKE-WULF [SWS02-F02]  
**Ta 152 H-1**  
SUPER WING SERIES  
1/32 "Ta 152 H-1"  
Used with the "Ta 152 H-1" kit.

**Armament Crew Set**  
4 518992 503271

## Armament Crew Set Assembly Instructions

Assemble these figures while assembling your SWS 1/32 "Ta 152 H-1" kit. Please refer to the kit's Instruction Manual too.

### Kit's Parts Assembly



C-14 MK108 Magazine

D-13 Outer Panel

1/32 Ta 152 H-1  
Instruction Manual **p13**

1/32 Ta 152 H-1  
Instruction Manual **p14**

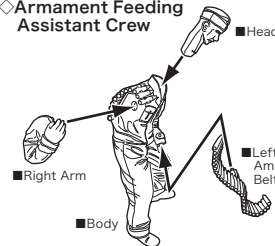


**Display Example**

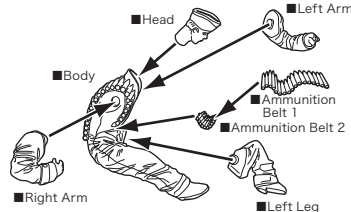
### Armament Feeding Crew Assembly

Please assemble the resin parts of this set after reading the "Important Points for Assembly".

#### Armament Feeding Assistant Crew



#### Armament Feeding Crew

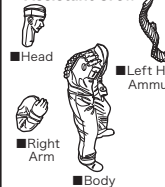


### Important Points for Assembly

- Please carefully read the assembly manual prior to opening and make sure that everything is included.
  - To use this item, tools such as ●Nippers, ●craft knife, ●files, ●sanding papers, ●instant glue, etc., are required, so please prepare them.
  - Please prepare the parts first. You can remove seam lines and gate marks with tools such as nippers, a craft knife and files. Urethane resin is softer than the plastic material used for the kit, so be careful to avoid carving too much. Air bubbles can be filled with putty (epoxy, plastic, etc.) or similar, then finished with sanding paper. In the case that mold details are lost, you can recover them with tools such as spatulas.
  - During assembly, adjust the orientation of each part while checking the balance and pose of the entire kit.
  - Instant glue should be used for these parts. Please note that glue cannot be used with plastic model kit cement.
  - We recommend using brass wire (sold separately) to reinforce the areas where the parts are glued together. Use a pin vise and drill bit to open a hole on both sides of each gluing surface, then insert the ends of a brass wire into the holes to connect the sides. This will greatly increase the strength of each joint. (Using the wires without glue to temporarily build a figure is called dry fitting. We recommend doing so in order to check each figure's balance.)
  - Base preparation is required before painting. Please thoroughly finish the base with a coat of surfacer spray (otherwise, the paint will chip off as time passes).
  - The recommended brand for painting your kit is the environment-friendly latest line of paint from Vallejo Color. Please refer to the Zoukei-mura 1/32 "Ta 152 H-1" Instruction Manual and Luftwaffe historical manuals to paint the model with the coloring of your choice.
- ※When it comes time to use tools and paints, please carefully follow each tool instructions for your safety.

### Chart of Included Parts

#### Armament Feeding Assistant Crew



#### Armament Feeding Crew

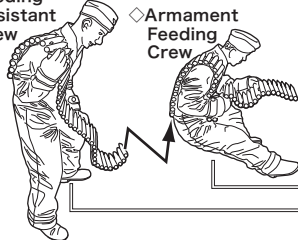


We take the utmost of care when overseeing manufacturing, but if your kit is among the very small percentage that contains a defective part, please contact customer service within two weeks of your purchase with your full name and order number.  
**Purchasers from VOLKS Japan International Web Site:**  
 Please contact [imos@volks.co.jp](mailto:imos@volks.co.jp).  
**Purchasers from VOLKS USA:**  
 Please contact [service@volksusa.com](mailto:service@volksusa.com).

### Armament Feeding Crew Display

When assembling this set, the processed outer panel (part D-13) and the MK108 magazine pile up. As shown below, please remove each hatch and display the crew figures. (Refer to the "Example" above.)

#### Armament Feeding Assistant Crew



#### Armament Feeding Crew

