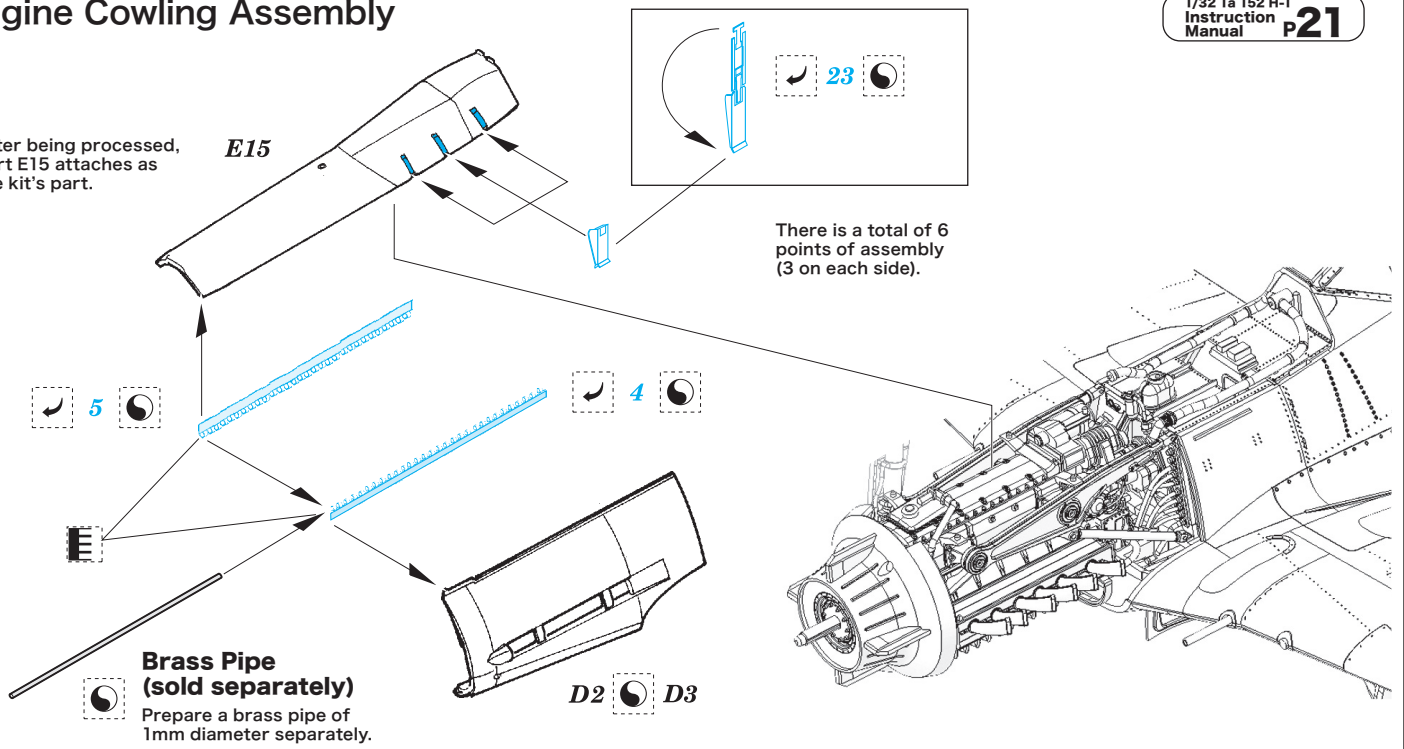


Engine Cowling Assembly

1/32 Ta 152 H-1
Instruction Manual **P21**

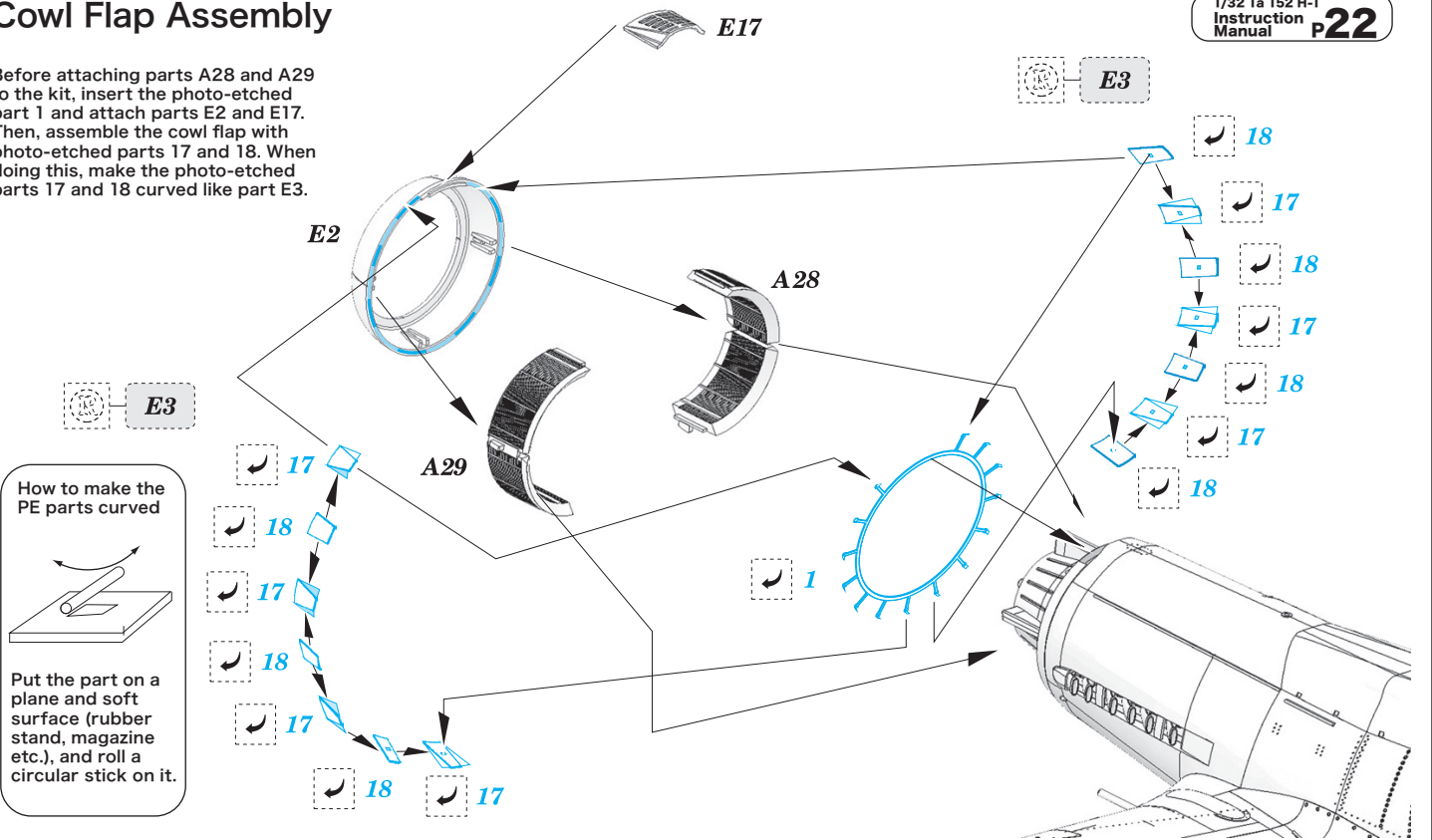
After being processed, part E15 attaches as the kit's part.



Cowl Flap Assembly

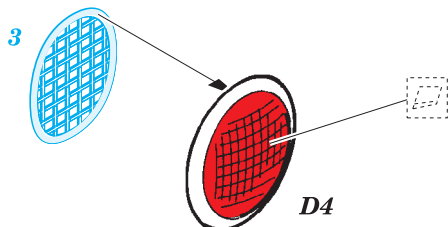
1/32 Ta 152 H-1
Instruction Manual **P22**

Before attaching parts A28 and A29 to the kit, insert the photo-etched part 1 and attach parts E2 and E17. Then, assemble the cowl flap with photo-etched parts 17 and 18. When doing this, make the photo-etched parts 17 and 18 curved like part E3.



Air Inlet Assembly

1/32 Ta 152 H-1
Instruction Manual **P22**



Loop Antenna Assembly

1/32 Ta 152 H-1
Instruction Manual **P28**

